



What Is NetBeans?

**Java Metroplex Users Group
March 14, 2007**

Gregg Sporar

NetBeans Technology Evangelist

Sun Microsystems, Inc.

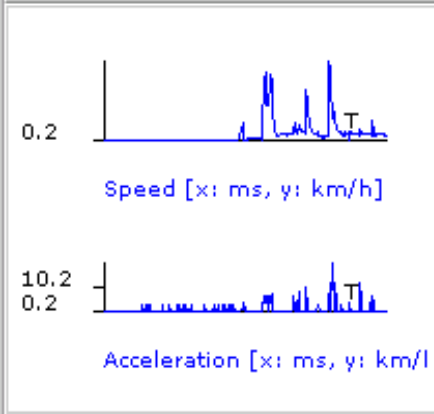


What Is NetBeans?

An open source project that provides *free* tools and platforms for building applications.

8.5/13.4MB

Speed [x: ms, y: km/h]



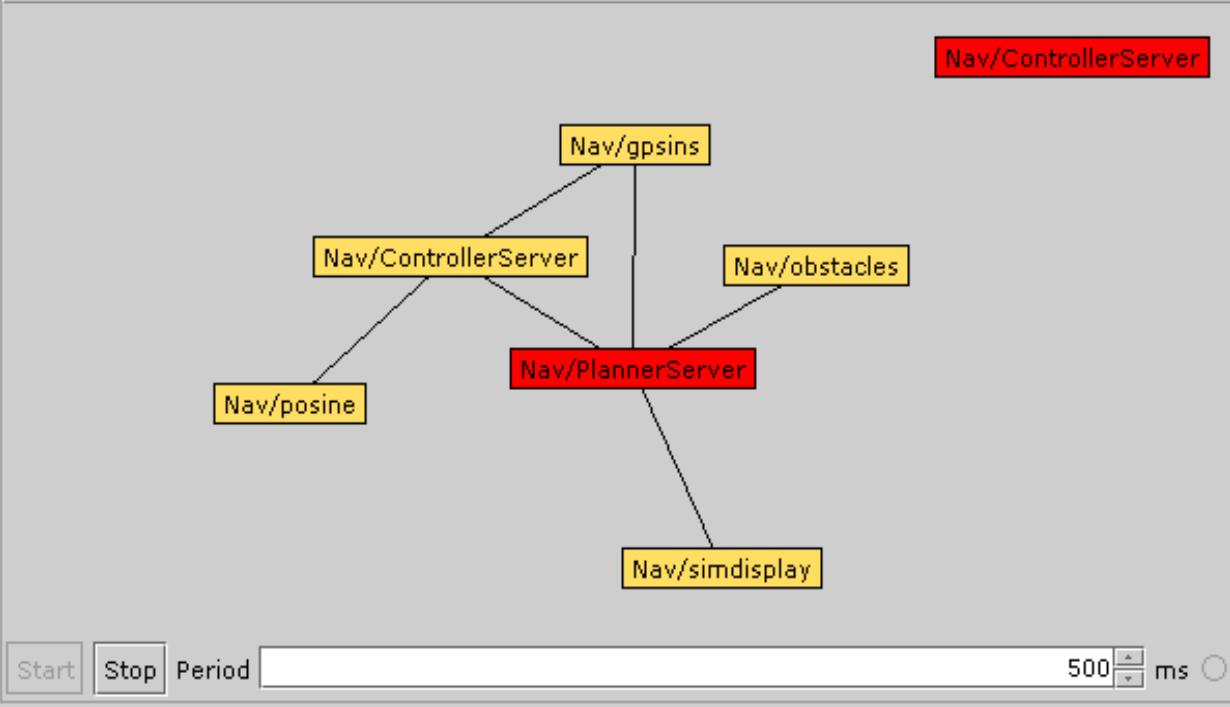
Visual History Actual Start Stop Period 500 ms

Position Horizon



Start Stop Period 500 ms

Graph View TVC Flog Parser Local Map Global Map

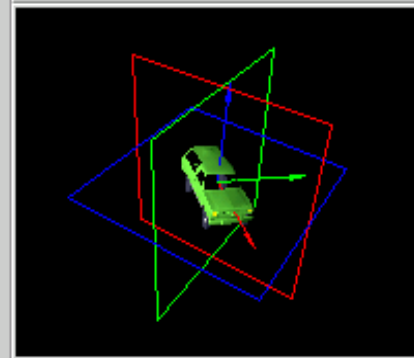


Lidar



Start Stop <> Period 500 ms

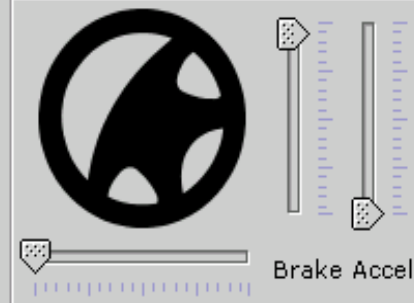
INS



Visual History Actual Start Stop Period 50 ms

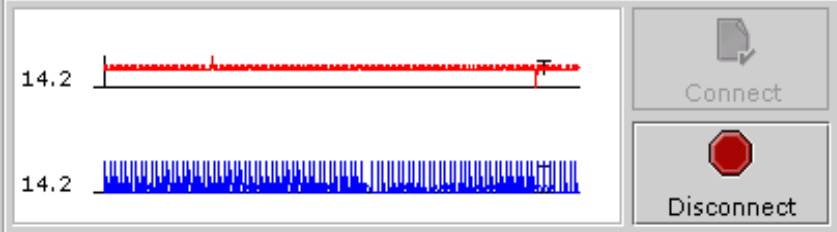
Tires Posine

Ignition! halt!



Visual History Actual Start Stop Period 50 ms

Setup Output - System Files



Data Source Command GPS Point List

Runtime

- CdP Settings
- Configurator
- IcePack/Locator:tcp -h localhost -p 120
 - Nav/lidar
 - Nav/pilot
 - Nav/gpsins

Nav/PilotServer - Properties

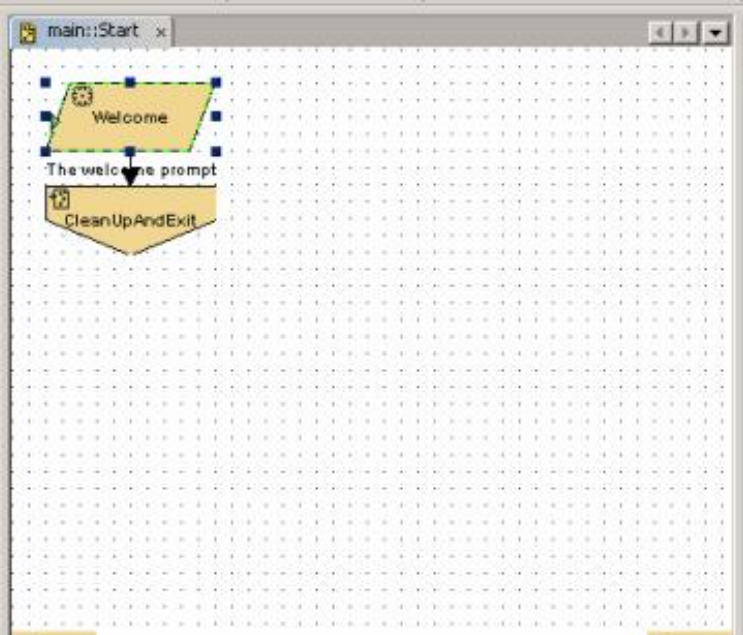
Properties	
Logger Admin	
Logger URL	mithrandir:32848
Policy	3
Functions policy	<input type="checkbox"/>
Cell.authors	<input checked="" type="checkbox"/>
Cell.getLoggerAdmin	<input checked="" type="checkbox"/>



Projects Dialog Obj... FAST Appli...

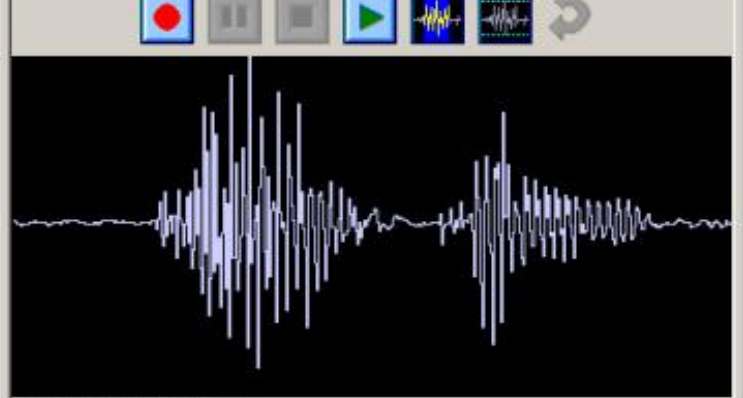
VoiceXMLApplication2

- main
 - Design
 - Start
 - CleanUpAndExit
 - Prompts
 - BackendError.prompt
 - CleanUpAndExit_sayGoodbye.p
 - Start_Welcome.prompt
 - help_universal.prompt
 - mainmenu_universal.prompt
 - operator_universal.prompt
 - Grammars
 - VoiceXML
 - Sample Data
 - dt



App Page

Start_Welcome



Length: 0.686 Position: 0.0

Transcript: Welcome

Instructions:

TTS Generation: en-US, default

Design Properties

General Actions

Description	Condition	Action Steps	Destination
The welcome prompt	Edit by selecting, then typing in the field(s)	Prompt "Welcome"	Go to page CleanUpAndExit

Action Steps

Prompt "Welcome"

Action Step

Prompt Content

Simple Concatenated Random

Simple

File: Start_Welcome

Transcript: Welcome

Instructions:

Prompt Information

Barge-in

Barge-in?

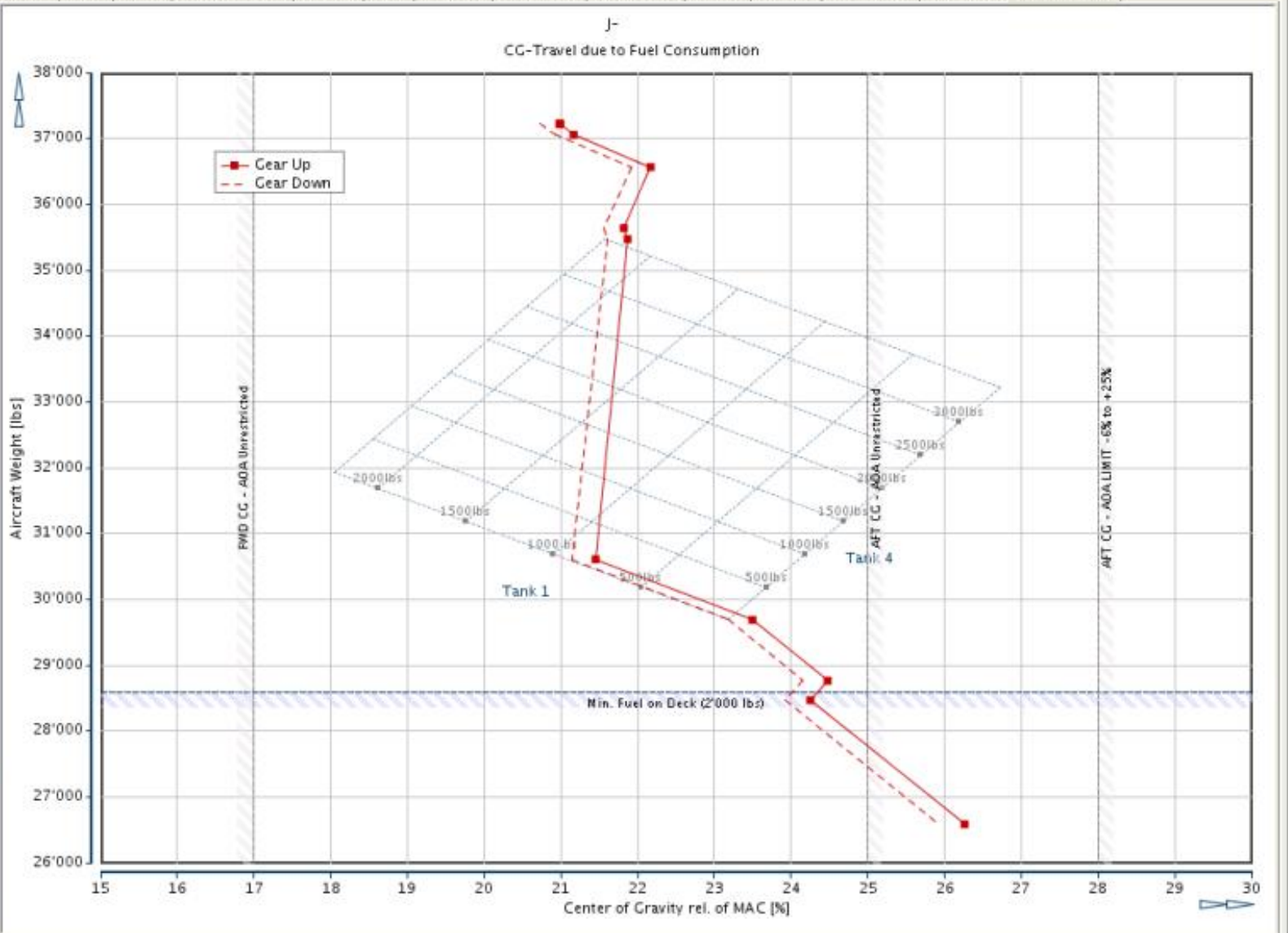
Barge-in Type: Speech Hotword

Timeout:

Language:

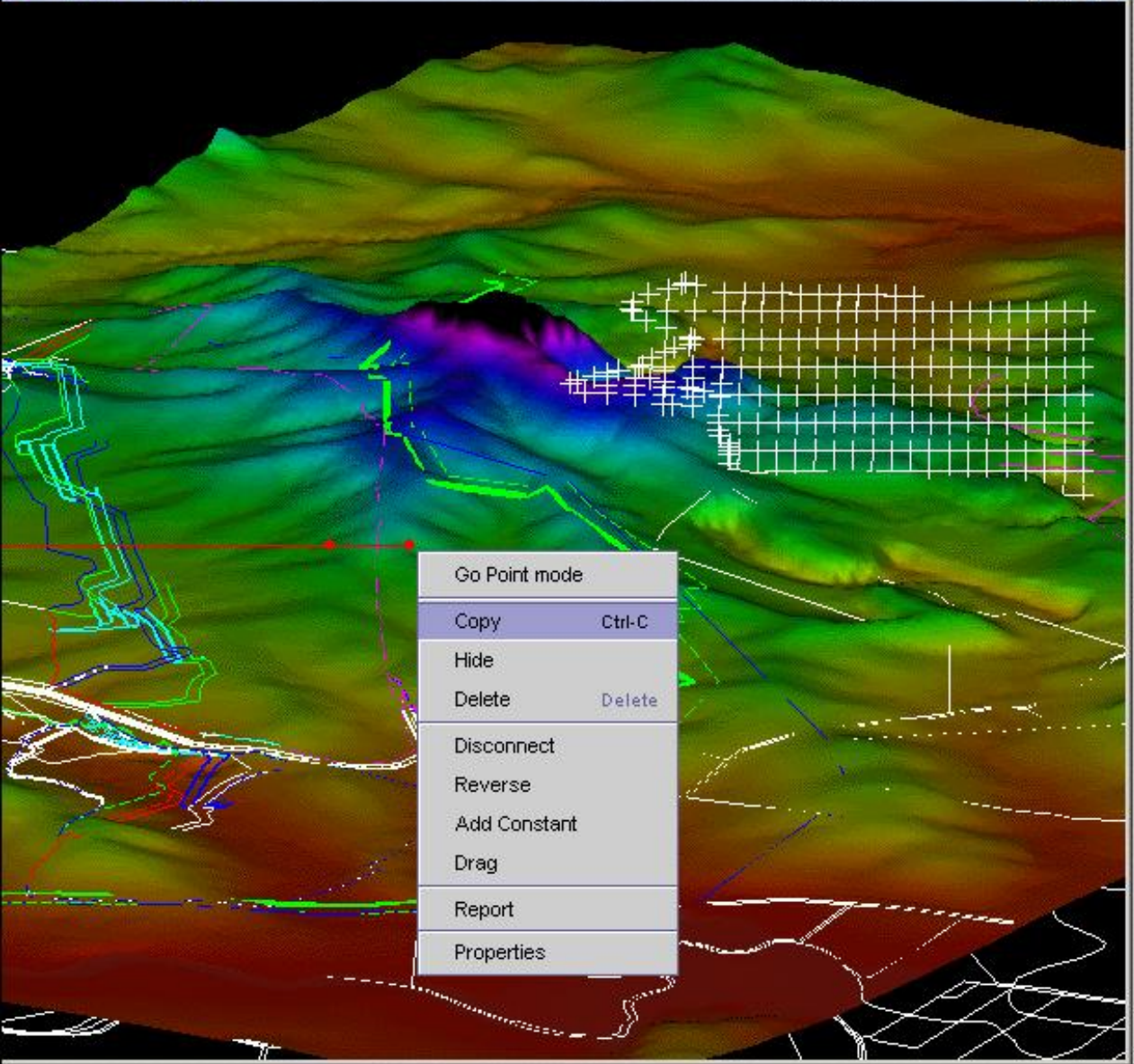
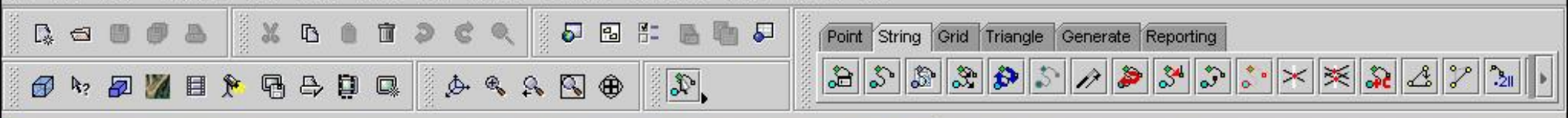


- Test W&B
 - J-
 - Configuration
 - Cockpit
 - Pilot
 - Pilot-Seat
 - Internal-Tank
 - Internal Fuel FA-18C
 - Fuselage
 - Gun Bay
 - ALBUS J-
 - Chaff-Flare
 - Fwd Left
 - ALE- Chaff
 - Fwd Right
 - ALE- Chaff
 - Aft Left
 - Aft Right
 - Wing
 - Station 1
 - LAU- Launcher
 - Station 2
 - Station 3
 - Station 4
 - LAU- Launcher
 - Station 5
 - Station 6
 - LAU- Launcher
 - Station 7
 - Station 8
 - Station 9
 - LAU- Launcher
 - Auxiliary
 - Aux 1
 - Aux 2
 - Aux 3
 - Aux 4
 - Aux 5
 - Aux 6
 - Aux 7



```

Creating DocBook-file...
Transforming xsl by stylesheet ...
Transforming fo to pdf...
Info: Using com.sun.org.apache.xerces.internal.parsers.SAXParser as SAX2 Parser
Info: building formatting object tree
Info: setting up fonts
Info: [1]
  
```



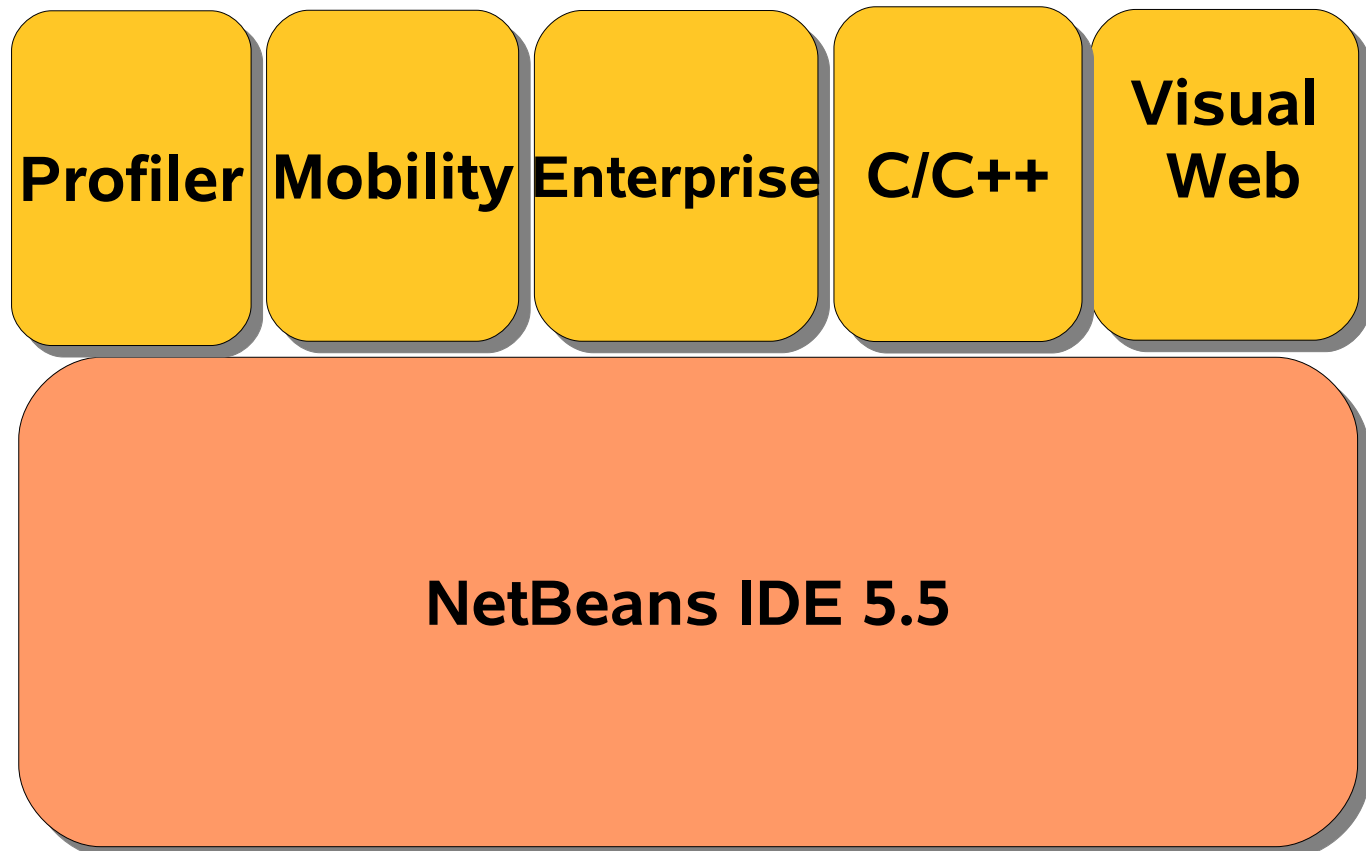
- JAND_1
- ECSUSERS
- Status
- netbeans_developer
- MANDEC
 - Groups
 - Maps
 - Idents
 - Classes
 - Strings
- TEST
- DECMRW.GRD
 - EXPOSED
 - HOT
 - TOPS
- reports
- DAWORK.TMP000960
- DAWORK.TMP001252

Navigation controls including a compass rose with N, S, E, W, and Normal directions. A Dip slider ranges from -90 to 90. Precision settings for Azimuth (148), Dip (17), and Z-Amp (2) are shown with up/down arrows.

What Is The NetBeans IDE?

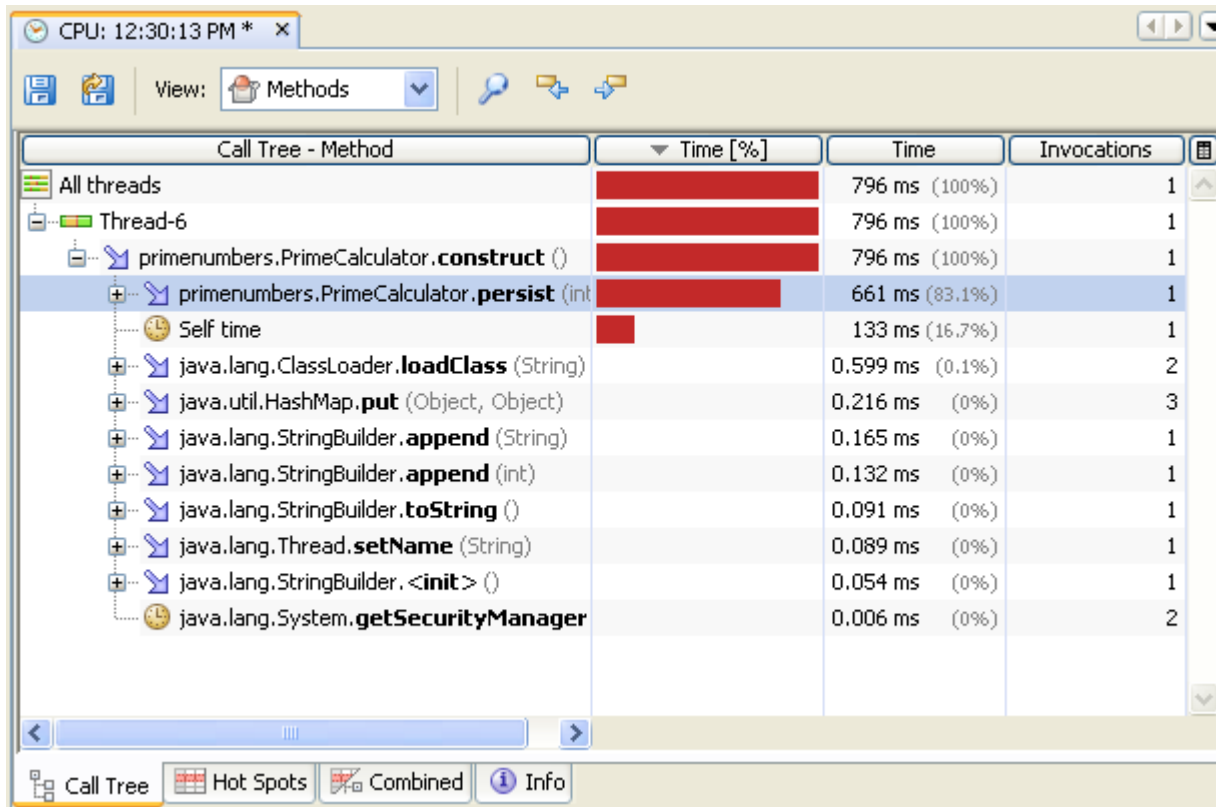
All the tools needed to create professional cross-platform desktop, enterprise, web, and mobile applications.

- Open Source and **Free**
- Out of Box Full Support for:
 - > Java EE 5
 - > Java SE 6
 - > ... and more
- Extended Features via Packs



Packs

Profiler

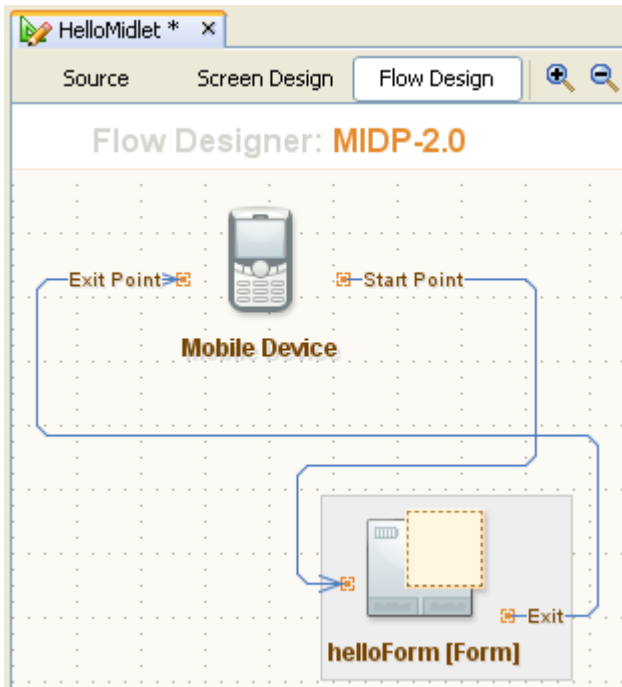


Integrated Performance Profiling Tools:

- > CPU Time
- > Thread State
- > Memory Usage/Memory Leak Detection

Packs (cont'd)

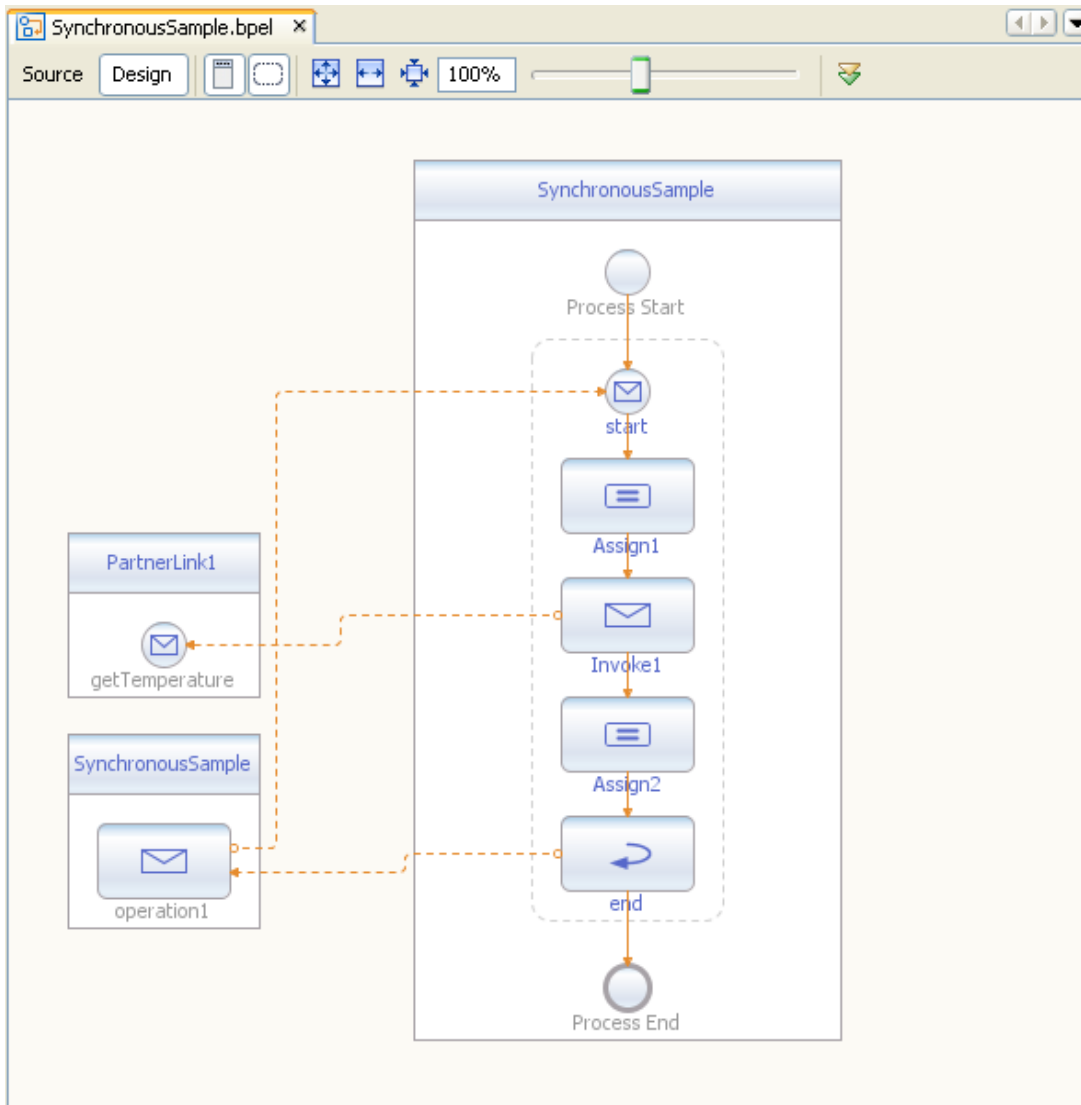
Mobility Pack



- Award winning support for Java ME development
 - > **C**onnected **L**imited **D**evice **C**onfiguration/**M**obile **I**nformation **D**evice **P**rofile
 - > And now, support for **C**onnected **D**evice **C**onfiguration too!
- Visual Development Tools
- Emulator Support
- Device Fragmentation Solutions

Packs (cont'd)

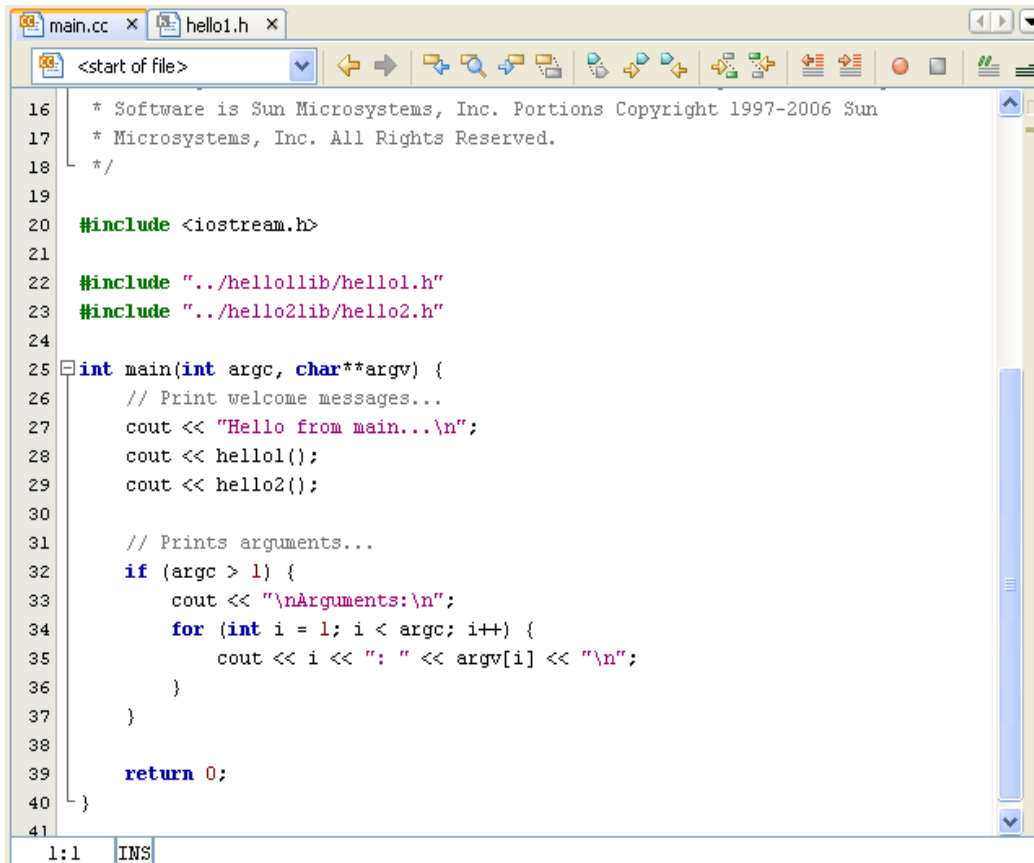
Enterprise Pack



- Visualize, analyze, and edit real-world XML Schema, WSDL, and XML instance documents
- Develop secure, identity-enabled Java EE Web services
- Design BPEL business processes
- “Tools for 208”

Packs (cont'd)

C/C++ Pack

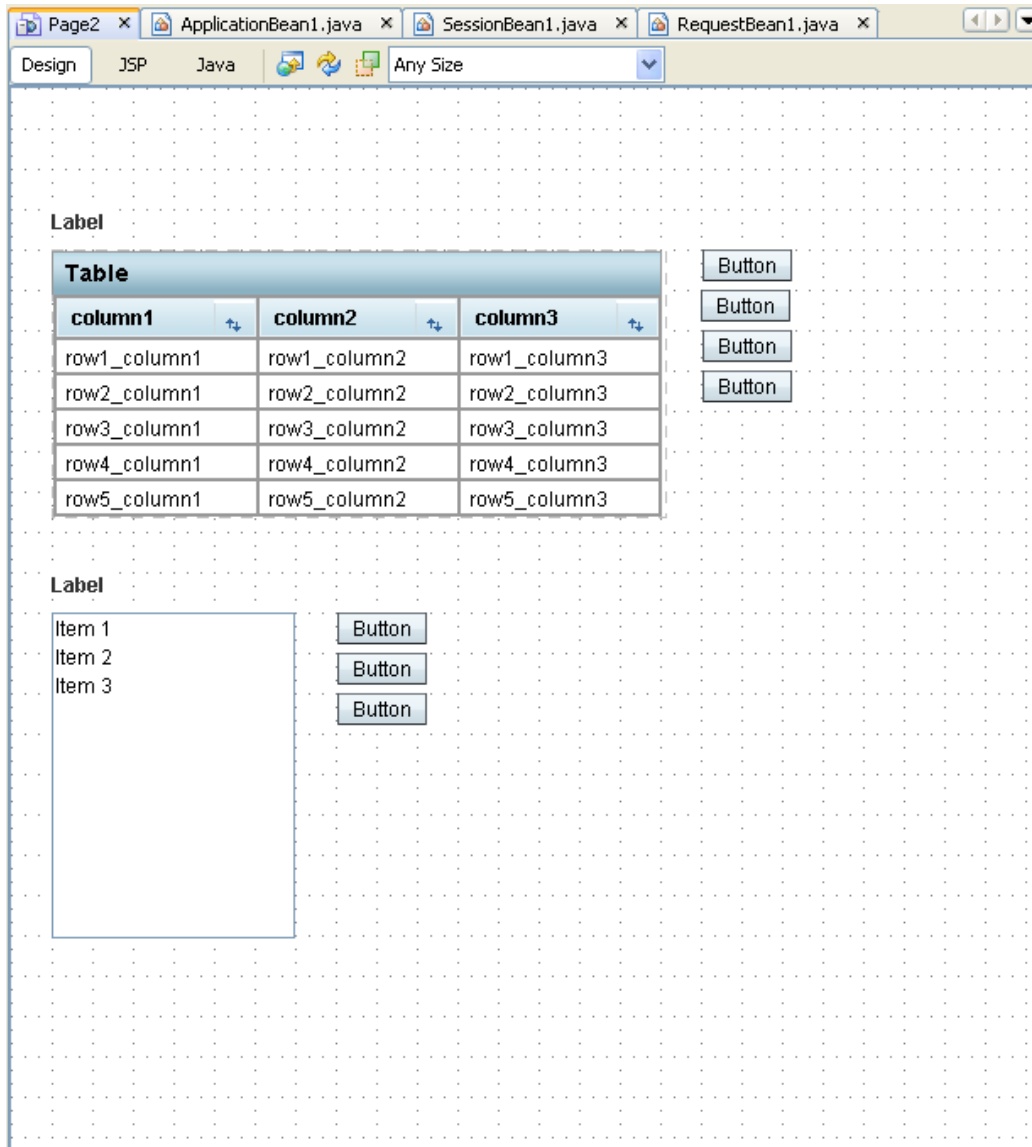


```
main.cc x hello1.h x
<start of file>
16  * Software is Sun Microsystems, Inc. Portions Copyright 1997-2006 Sun
17  * Microsystems, Inc. All Rights Reserved.
18  */
19
20  #include <iostream.h>
21
22  #include "../hello1lib/hello1.h"
23  #include "../hello2lib/hello2.h"
24
25  int main(int argc, char**argv) {
26      // Print welcome messages...
27      cout << "Hello from main...\n";
28      cout << hello1();
29      cout << hello2();
30
31      // Prints arguments...
32      if (argc > 1) {
33          cout << "\nArguments:\n";
34          for (int i = 1; i < argc; i++) {
35              cout << i << ": " << argv[i] << "\n";
36          }
37      }
38
39      return 0;
40  }
41
1:1 INS
```

- NetBeans is more than a Java IDE
- Supports features you know from the Java IDE:
 - > Navigation, code folding
 - > Code completion, templates
 - > Make file mgm't

Packs (cont'd)

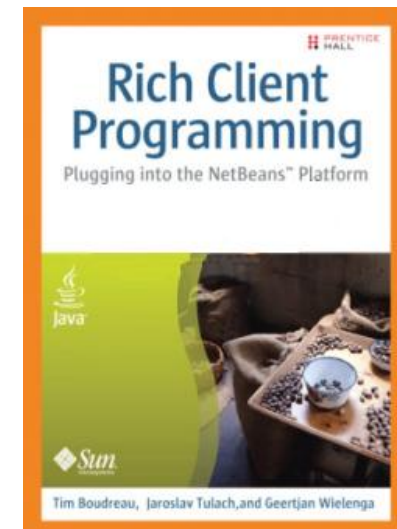
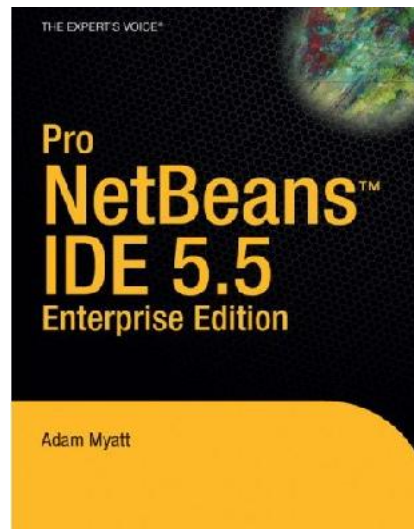
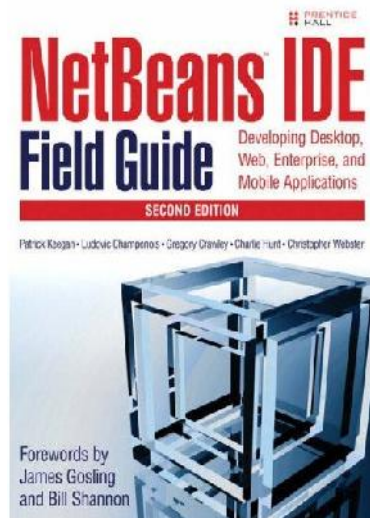
Visual Web Pack



- Based on the award-winning Java Studio Creator 2
- Visual Drag-n-Drop Environment for Creating Web Applications
- Includes Ajax-enabled Java Server Faces Components

NetBeans Community

- Over 12 Million Downloads
- Over 500,000 mailing list subscribers
- Over 100 Partner Companies
<http://www.netbeans.org/community/partners/index.html>
- Active Blogging Community: <http://planetnetbeans.org/>
- Books: <http://www.netbeans.org/kb/articles/books.html>



Resources

- Project Home Page: <http://www.netbeans.org>
- Have a Question About/Problem With The IDE?
 - > nbusers@netbeans.org
 - > Or via Nabble: <http://www.nabble.com/Netbeans---Users-f2605.html>
- Quick Start Tutorials:
<http://www.netbeans.org/kb/55/quickstart.html>
- Using NetBeans Guide:
<http://www.netbeans.org/kb/55/using-netbeans/index.html>
- Learning Trails, Flash Demos, and more:
<http://www.netbeans.org/kb/>
- Blogs: <http://planetnetbeans.org/>



Thank You!

Gregg Sporar
gregg.sporar@sun.com

